

# BENEFITS

**AN ANNEX FOR ST GILES SCHOOL** *Self-contained, safe and welcoming space for use by the school community will provide invaluable benefits and further reinforce our school/church bond. The prospect, for example, of our children having the chance to engage there from time to time with residents from Westall House, is particularly uplifting.*

**Hilary Douch, Headteacher, St Giles School**

**SANCTUARY & SAFETY** *We both feel this will absolutely make the church more accessible to all our residents and this will mean that we will be able to assist them to attend more services and concerts, which will be wonderful.*

**Jemma Thompson & Heather Rogers – Westall House, Horsted Keynes**

**WELCOME** We will have safe and efficient kitchen facilities to serve and welcome those engaged in an increasing number of activities across church, school and the Friends of Horsted Keynes Church (FOHKC). The kitchen area will be behind a door to keep the young and vulnerable safe.

**NURTURE** Our families will have a warm, light space connected to the church for Sunday Club and crèche and community use.

**CONVENIENCE & COMFORT** We have been saying for far too long that it is shameful that we do not provide convenient, inclusive toilet facilities, including of course provision for nappy changing.

**FLEXIBILITY** Our new spaces will facilitate diverse uses of the main church building, particularly for FOHKC productions, and for concerts and talks, providing appropriate space for “back-stage” and bar facilities.

The annex will encourage diverse and inclusive community-wide use of our precious and wonderful church.

*These facilities will enable a whole host of events from coffee mornings to musical spectacles, which we have often previously held in the church; they would have been even more successful and easier to stage if we had had facilities like these.*

**Sarah Toland, Chair of The Friends of Horsted Keynes Church Committee**



# ST GILES ANNEX

## for CHURCH, SCHOOL & HORSTED KEYNES

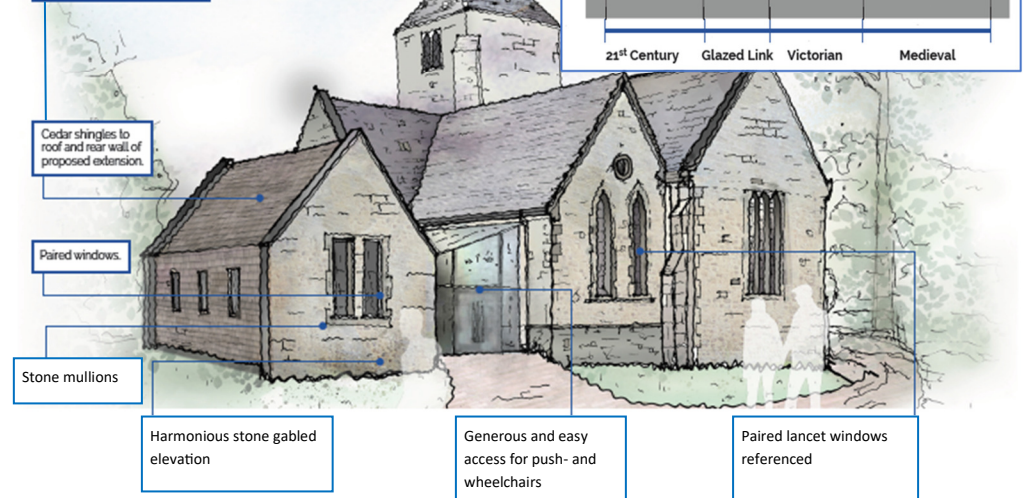
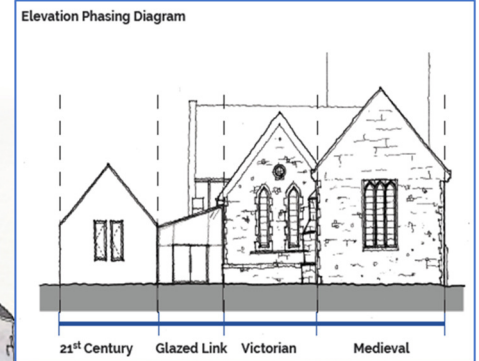
We are going to build an annex between St Giles School and Church, attached to the north wall of the north aisle of the church by a glazed link, accessed through the north door or directly from the school path. While the design of the annex complements the ancient beauty of our Grade-1-listed building, its functionality offers transformational benefits to Church, school and village communities.



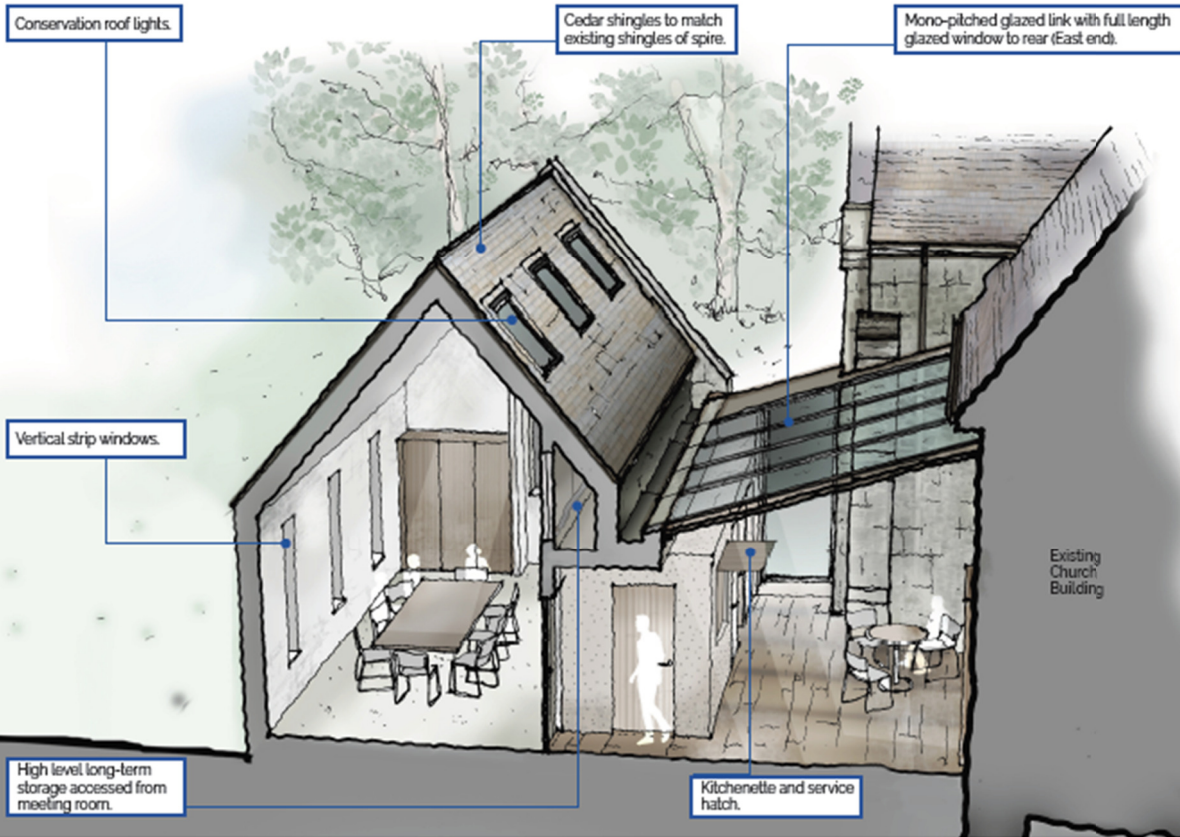
## OUTSIDE



Existing cedar shingled spire.



# INSIDE



**How the annex will work** The annex spaces are all on one level, at the same height as the floor of the church (the step in the current north doorway will be removed). The school path will be re-shaped to rise gently to a generous external glazed entrance doorway. The current outside wall of the north aisle of the church, with its Kempe stained-glass windows, will be a feature from within the welcoming glazed link area. The facilities pod divides the link from the multi-use room and has soundproofing cladding. All spaces will feel warm and light. The glazed link roof structure is designed to make regular cleaning relatively simple, maintaining its transformative reflective delights. In the multi-use room, vertical slot windows align with conservation roof lights.



Glazed doorway from school path

**Floorplan** The total annex floor plan is 74 square metres. There are two toilets — one wheelchair accessible. The galley kitchen facilities (safely housed behind a lockable door) open via a service hatch on to the informal glazed seating area, which has room for coats and pushchairs. The multi-use room is set up, below, for a meeting. Other set-ups could be informal, or seating could be arranged for a maximum of 30 people to view a screen and listen to services, concerts or productions relayed from the main church space. Storage is bespoke throughout, including cupboards under window seats. Pile foundations and contemporary construction techniques are designed to avoid and protect existing graves and trees.

